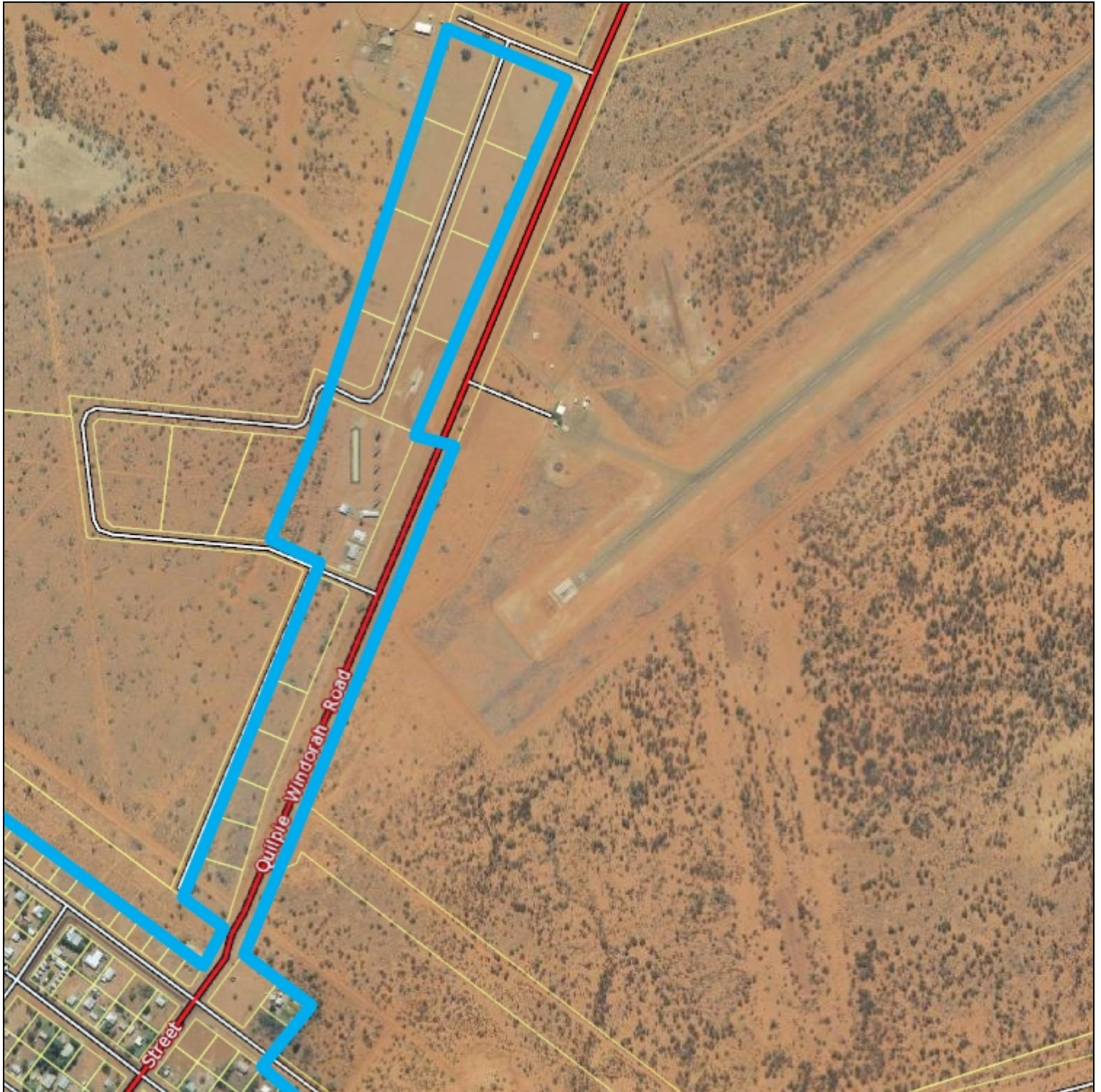


Windorah

Declared Water Service Area - Map 2 of 2

25°24'23"S 142°39'19"E

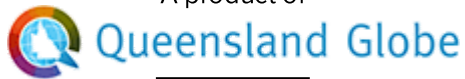
25°24'23"S 142°40'16"E



25°25'15"S 142°39'19"E

25°25'15"S 142°40'16"E

A product of



Legend located on next page



0 250 metres

Scale: 1:9000

Printed at: A4

Print date: 14/2/2020

Datum: Geocentric Datum of Australia 1994
Projection: Web Mercator EPSG 102100

For more information, visit
<https://qldglobe.information.qld.gov.au/help-info/Contact-us.html>

Includes material © State of Queensland 2019. You are responsible for ensuring that the map is suitable for your purposes. The State of Queensland makes no representation or warranties in relation to the map contents and disclaims all liability.

Imagery includes material © CNES reproduced under license from Airbus DS, all rights reserved © 21AT © Earth-i, all rights reserved, 2019



**Queensland
Government**

Department of Natural Resources, Mines and Energy

Windorah

Declared Water Service Area - Map 2 of 2

Legend

Attribution

Land parcel

 Parcel

Road crossing

 Bridge

 Tunnel

Road

 Highway

 Main

 Local

 Private

Railway



DigitalGlobe

Includes material © The State of Queensland, all rights reserved, 2019.

© State of Queensland (Department of Natural Resources, Mines and Energy) 2018

© State of Queensland (Department of Natural Resources, Mines and Energy) 2019

© State of Queensland (Department of Natural Resources and Mines), 2016